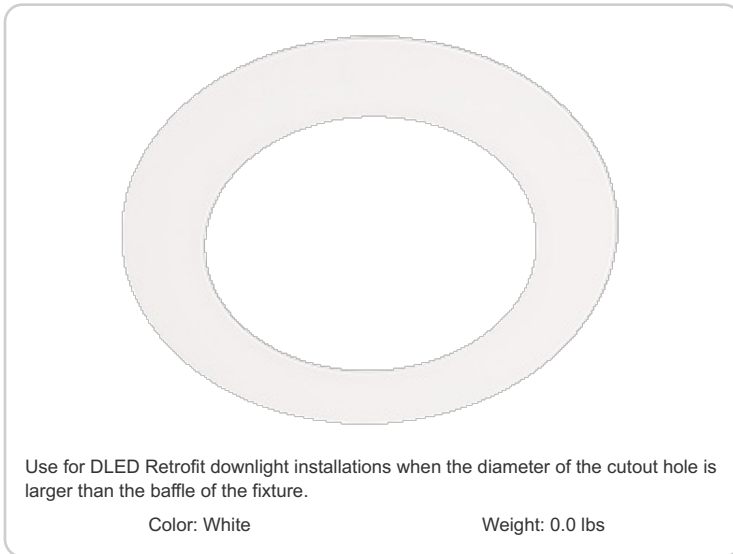


# GOOFRING DLED4



<b>Project:</b>	<b>Type:</b>
<b>Prepared By:</b>	<b>Date:</b>

Use for DLED Retrofit downlight installations when the diameter of the cutout hole is larger than the baffle of the fixture.

Color: White

Weight: 0.0 lbs

## Technical Specifications

### Other

#### Description:

Use for DLED 4" Retrofit downlight installations when the diameter of the cutout hole is larger than the baffle of the fixture.

#### Country of Origin:

Designed by RAB in New Jersey and assembled in the USA by RAB's IBEW Local 3 workers.

#### Buy American Act Compliant:

This product is a COTS item manufactured in the United States, and is compliant with the Buy American Act.

#### Recovery Act (ARRA) Compliant:

This product complies with the 52.225-21 "Required Use of American Iron, Steel, and Manufactured Goods-- Buy American Act-- Construction Materials (October 2010).

#### Trade Agreements Act Compliant:

This product is a COTS item manufactured in the United States, and is compliant with the Trade Agreements Act.

#### GSA Schedule:

Suitable in accordance with FAR Subpart 25.4.

### Construction

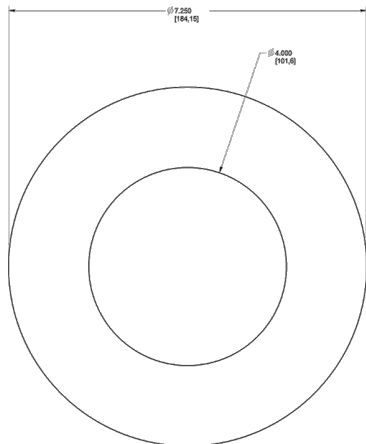
#### Material:

Stamped aluminum

#### Finish:

Our environmentally friendly polyester powder coatings are formulated for high-durability and long-lasting color, and contains no VOC or toxic heavy metals.

## Dimensions



## Features

Available in white finish

Fits 4" and 6" RAB DLED fixtures

# GOOFRING DLED4



## Ordering Matrix

Family	Compatibility
GOOFRING	

**DLED4** = Retrofit Downlight Round 4"

**DLED6** = Retrofit Downlight Round 6"